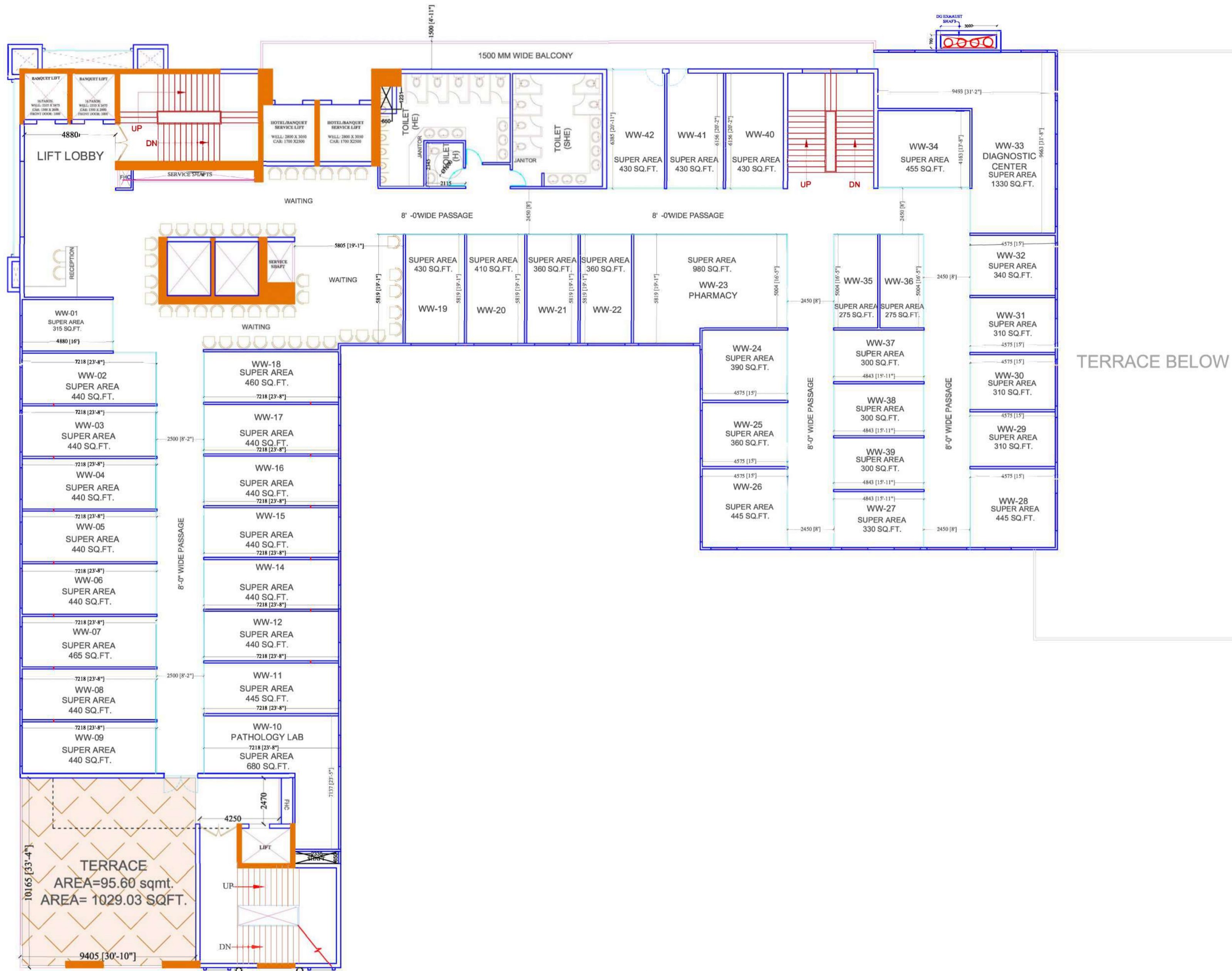


PLOT - C3



9TH FLOOR - WELLNESS WORLD					
S.NO.	SHOP NO.	BUILTUP AREA (SQ.MT.)	BUILTUP AREA (SQ.FT.)	SUPER AREA (SQ.FT.)	TERRACE CARPET AREA (SQ.FT.)
1	TERRACE AREA				1029.03
2	WW-01	14.34	154.36	315	
3	WW-02	20.63	222.06	440	
4	WW-03	20.63	222.06	440	
5	WW-04	20.63	222.06	440	
6	WW-05	20.63	222.06	440	
7	WW-06	20.63	222.06	440	
8	WW-07	20.63	222.06	465	
9	WW-08	20.63	222.06	440	
10	WW-09	20.63	222.06	440	
11	WW-10	33.74	363.18	680	
12	WW-11	20.69	222.71	445	
13	WW-12	20.27	218.19	440	
15	WW-14	20.27	218.19	440	
16	WW-15	20.27	218.19	440	
17	WW-16	20.27	218.19	440	
18	WW-17	20.27	218.19	440	
20	WW-18	21.11	227.23	460	
21	WW-19	19.79	213.02	430	
22	WW-20	19.10	205.59	410	
23	WW-21	16.97	182.67	360	
24	WW-22	16.97	182.67	360	
25	WW-23	45.24	486.96	980	
26	WW-24	18.09	194.72	390	
27	WW-25	16.62	178.90	360	
28	WW-26	20.58	221.52	445	
29	WW-27	15.32	164.90	330	
30	WW-28	20.58	221.52	445	
31	WW-29	14.30	153.93	310	
32	WW-30	14.30	153.93	310	
33	WW-31	14.30	153.93	310	
34	WW-32	15.59	167.81	340	
35	WW-33	61.68	663.92	1330	
36	WW-34	20.99	225.94	455	
37	WW-35	12.25	131.86	275	
38	WW-36	12.25	131.86	275	
39	WW-37	13.94	150.05	300	
40	WW-38	13.94	150.05	300	
41	WW-39	13.94	150.05	300	
42	WW-40	20.09	216.25	430	
43	WW-41	20.09	216.25	430	
44	WW-42	20.09	216.25	430	
	TOTAL	833.28	8969.43		1029
	TOTAL SUPER AREA OF 9TH FLOOR			17950	

9TH FLOOR PLAN

PROJECT:-

"APEX PARK SQUARE COMMERCIAL COMPLEX"

PLOT - C3A ,SECTOR 16B , GREATER NOIDA

OWNER:-

M/s VIABLE VENTURES PVT. LTD.

ARCHITECT :- AR. VISHAL MITTAL

Space Designers International
 B-34 Sector-67, Noida -201301 (U.P.)
 Ph : 91-97-11-633717, 18
 e-mail : info@spacedi.com, www.spacedi.com